

## Body Waxing

BIKINI

EXT BIKINI

G-STRING BIKINI

BRAZILIAN

UNDERARM

FULL LEG

HALF LEG (LOWER OR UPPER)

¾ LEG

FULL ARM

HALF ARM

## Tinting

EYELASH TINT

EYEBROW TINT

LASH LIFT (NO TINT)

LASH LIFT (WITH LASH TINT)

BROW TINT & LASH TINT

BROW WAX + BROW TINT

BROW WAX/TINT/LASH TINT

## Spray Tans

THREE WARRIORS ORGANIC ODORLESS TAN - FULL BODY WITH FINISHING POWDER

## Make Up (Inika Cosmetics)

SPECIAL OCCASION

SCHOOL BALLS

## Face Waxing

EYEBROW (TRIM ONLY)

EYEBROW

LIP

CHIN

LIP & CHIN

EYEBROW & LIP

EYEBROW, LIP & CHIN

FULL FACE

SIDES FACE

NOSE WAX

## Hybrid Dye Tint

BROW ONLY

BROW + TIDY, MEASURE & SHAPE

BROW + LASH TINT

BROW DESIGN

Includes full design and restyling, full brow mapping, trimming, waxing, advanced colour enhancement.



BE YOUR  
OWN KIND  
OF *beautiful*

☎ 08 9313 5580

Shop 5A, 51 Farrington Road, Leeming 6149

[www.awakeningbeauty.com.au](http://www.awakeningbeauty.com.au)

[info@awakeningbeauty.com.au](mailto:info@awakeningbeauty.com.au)

BOOK ONLINE FOR  
FULL LIST OF TREATMENTS  
AND PRICING

  [awakeningskinbeauty](https://www.instagram.com/awakeningskinbeauty)



| Massage   |        | FROM  |
|---|--------|-------|
| D-STRESS DELUXE FULL SCALP (W SERUM), FACE, SHOULDERS, NECK | 45mins | \$120 |
| BACK, SHOULDERS + NECK                                      | 30mins | \$70  |
| MASSAGE   | 45mins | \$80  |
| FULL BODY   | 60mins | \$115 |
| + WARM JADE STONE TO ANY MASSAGE                            | 20mins | \$35  |

| Facials                    |        | FROM       |
|----------------------------|--------|------------|
| CUSTOMISED EXPRESS FACIAL  | 30mins | \$99       |
| CUSTOMISED DELUXE          | 60mins | From \$185 |
| CUSTOMISED DELUXE WITH LED | 80mins | \$245      |
| ANTI-AGEING                | 60mins | \$199      |

| Consultations                                 |  | FROM  |
|---|--|-------|
| SKIN SCAN, CLEANSE & EXFOLIATION              |  | \$75  |
| SKIN SCAN, CLEANSE, EXFOLIATION & FACIAL PEEL |  | \$180 |

| Peels                      |        | FROM  |
|----------------------------|--------|-------|
| PEEL & MASK                | 45mins | \$175 |
| STEP IT UP GET GLOWIN PEEL | 60mins | \$280 |

| Cosmetic Brow Tattoo |  |       |
|----------------------|--|-------|
| INITIAL TREATMENT    |  | \$620 |
| TOUCH UP 4/6 WEEKS   |  | \$180 |

**Oxygen Facial** \$199

---

Oxygen RX Instant Fresh Radiant  
(Note: No allergies to citric)

WITH EXPRESS FACIAL \$235

**Deluxe D-Stress** \$120

---

Full scalp treatment, hot towels infuse deluxe Argan oil hair serum, slow scalp massage to release scalp tension. Shoulder & neck massage.

WITH EXPRESS FACIAL \$230

**Firming Peptide Lift** \$220

---

Instant firming & tightening. Great for a skin pick-me-up, detoxification, and antioxidant.

**Super Glow Lift** POA

---

Take your skin up to the next level. This is your instant visible results skins work out (80 min).

**Skin Relax & Balance** \$200

---

Soothe, relax, slow down your busy mind. Let us customise your masks, serums Inc, shoulder, neck, face, feet, hot toweled massaged. This is definitely your facial (1 Hr).

**Facial Skin Tightening** POA

---

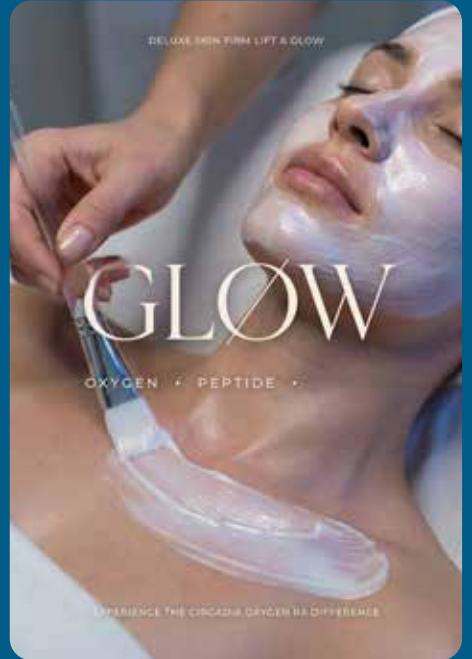
Jet Plasma is a powerful, needle-free treatment that tightens, hydrates, and rejuvenates the skin with no pain or downtime.

It strengthens the skin from within, targeting signs of ageing for a smoother, firmer look.

Expect noticeable improvements in texture, hydration, and overall skin quality - giving you a fresh, lifted glow after each session.

No needles. No discomfort. No downtime.

Just radiant results.



## BOOK ONLINE FOR FULL LIST OF TREATMENTS

Clients rescheduling or canceling appointments need to notify the salon 72 hours prior to any treatment. Failure to do so will regrettably result in a cancellation fee of 50% of the treatment cost. All prices are subject to variations without notice. T&Cs Apply.